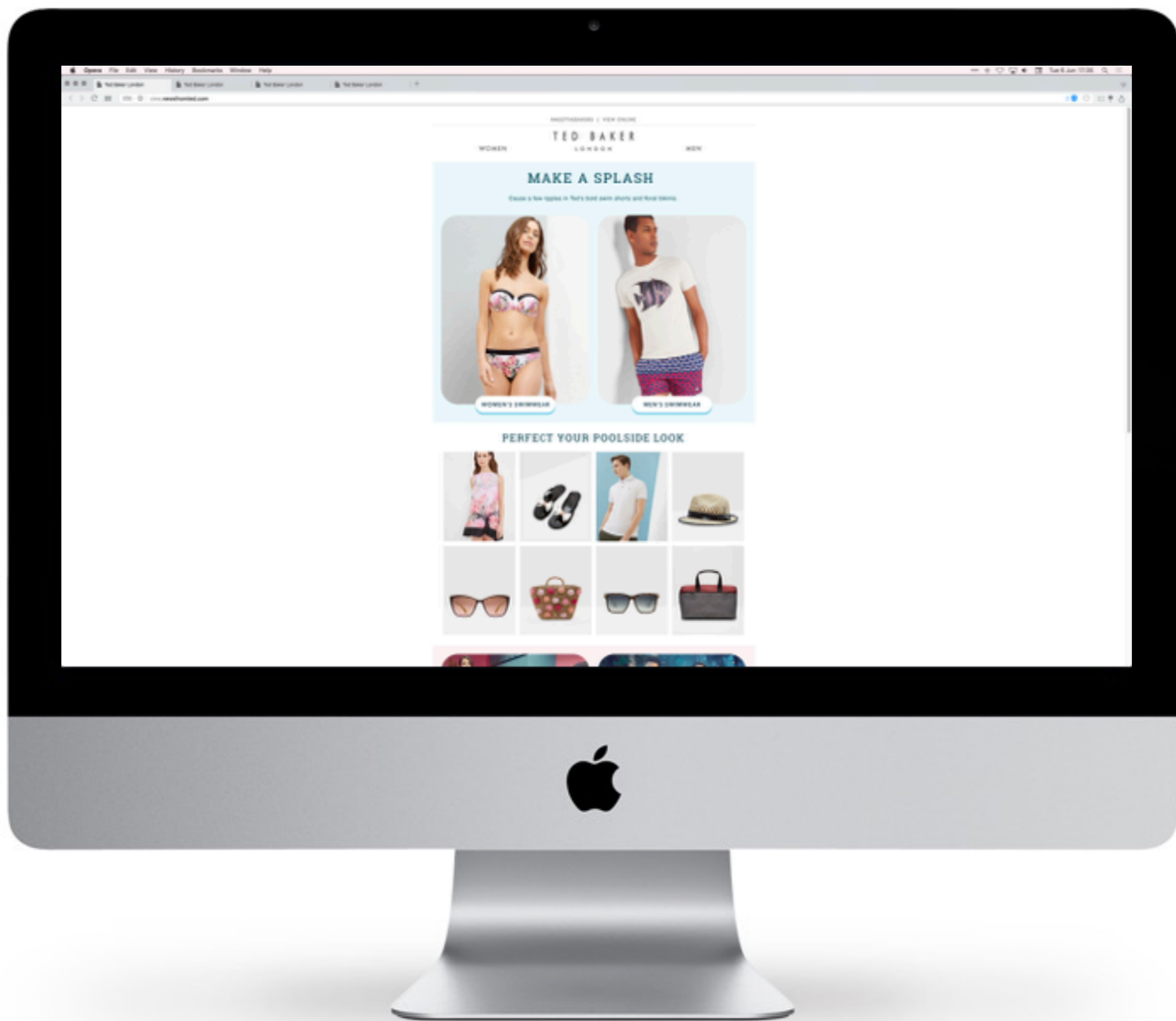
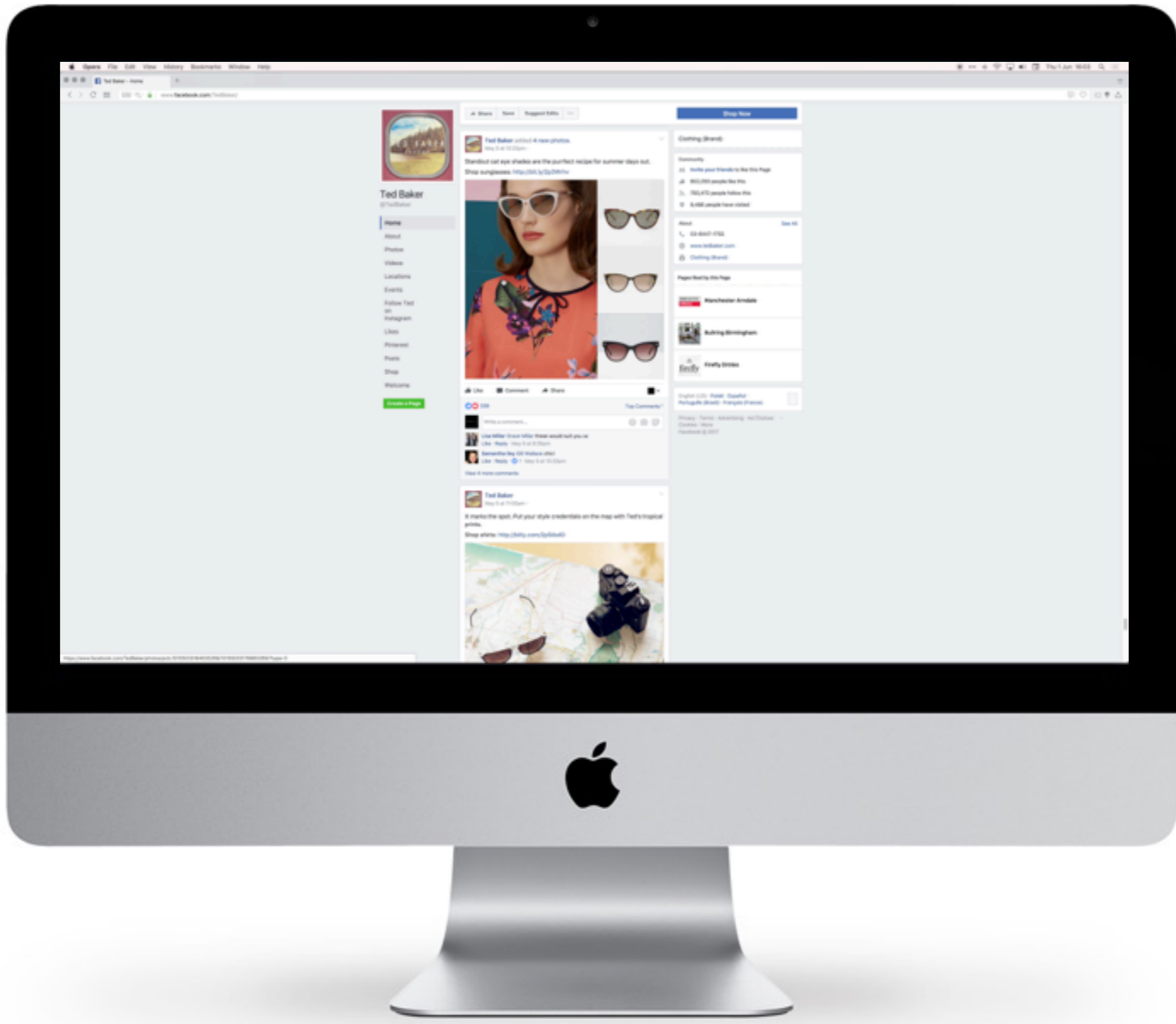




*Getaway with  
the Bakers*

T E D B A K E R  
L O N D O N





Opera | File | Edit | View | History | Bookmarks | Window | Help

Ted Baker - Home

www.facebook.com/TedBaker

**Ted Baker**  
@TedBaker

Home  
About  
Photos  
Videos  
Locations  
Events  
Follow Ted on Instagram  
Links  
Pages  
Shop  
Welcome

View this Page

**Ted Baker**  
May 2 at 10:28am

Standout cat eye shades are the perfect helper for summer days out.  
Shop sunglasses: <http://bit.ly/2p5867w>

Like Comment Share

**100**

Write a comment...

**Lee Miller** · Group Admin · What would you call you on  
Like · Reply · May 2 at 10:28am

**Samuel May** · May 2 at 10:28am  
Like · Reply · May 2 at 10:28am

View 4 more comments

**Ted Baker**  
May 2 at 10:28am

It marks the spot. Put your style credentials on the map with Ted's tropical prints.  
Shop shirts: <http://bit.ly/2p5867w>

**Clothing Brand**

Community

- 852,000 people like this
- 752,470 people follow this
- 3,488 people have visited

About See all

02 4647 0752  
[www.tedbaker.com](http://www.tedbaker.com)  
Clothing Brand

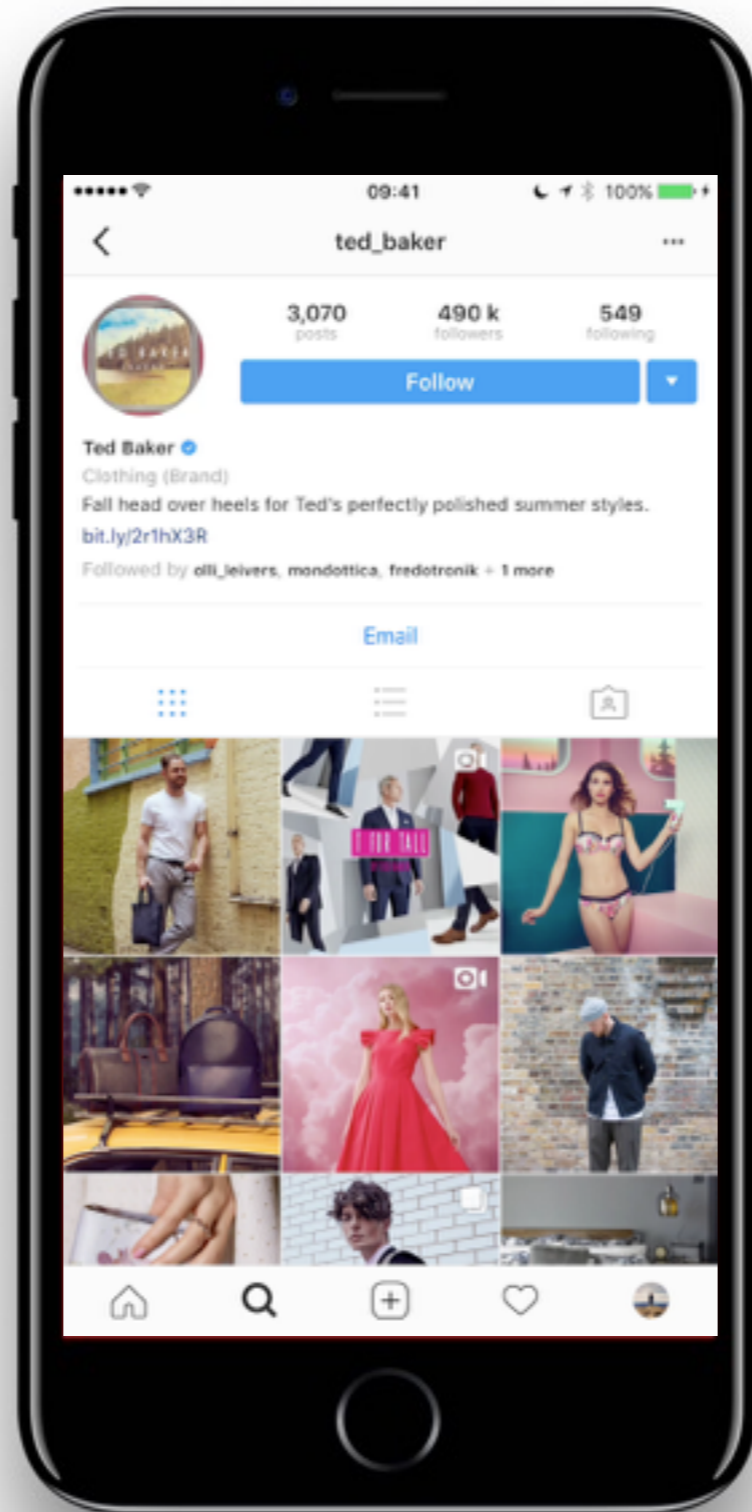
Pages From This Page

- More Fashion Brands
- Building Birmingham
- Flyby Britain

English (UK) · English (Canada) · Portuguese (Brazil) · Português (Portugal)

Privacy · Terms · Advertising · Ad Choices · Cookies · Help

Facebook © 2017



ted\_baker



3,070 posts

490 k followers

549 following

Follow

Ted Baker

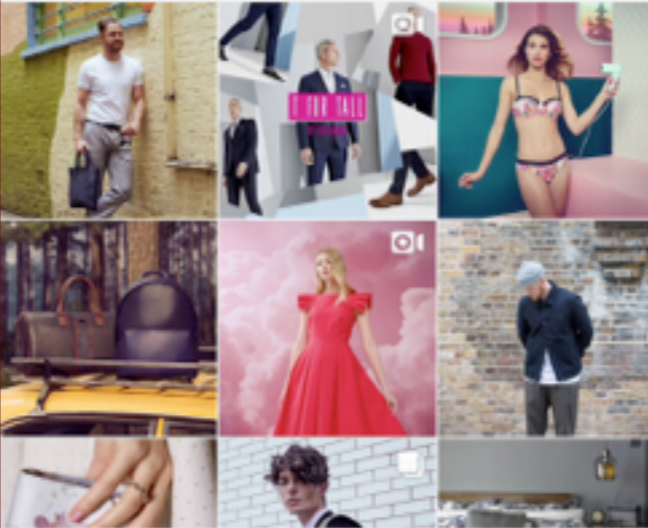
Clothing (Brand)

Fall head over heels for Ted's perfectly polished summer styles.

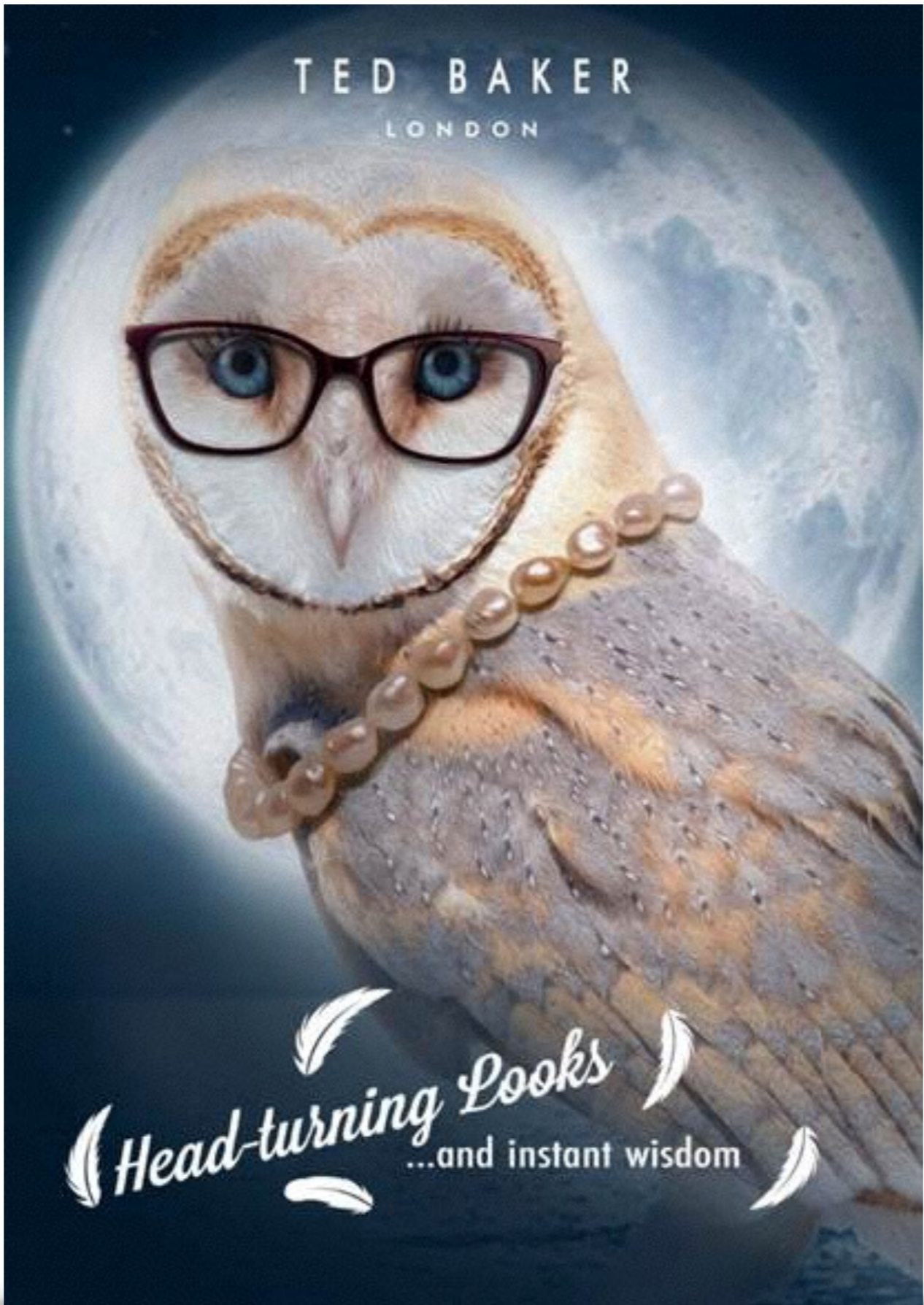
[bit.ly/2r1hX3R](https://bit.ly/2r1hX3R)

Followed by olli\_jeivers, mandottica, fredotronic + 1 more

Email



TED BAKER  
LONDON



*Head-turning Looks*  
...and instant wisdom

TED BAKER  
LONDON



*Sharper Vision*  
...and instant wisdom



T E D B A K E R

L O N D O N

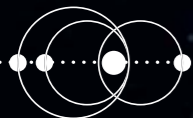
○ N E G I A N T L E A P

A W 1 7



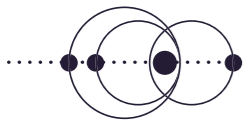
Discover a new fashion frontier...

Ted Baker and NOSA (No Ordinary Space Agency) have embarked on a fantastic voyage to bring you a new lifestyle on Sateen.

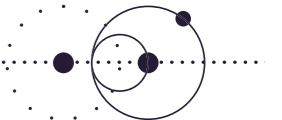




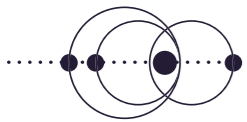
CAMPAIGN PHOTOGRAPHY



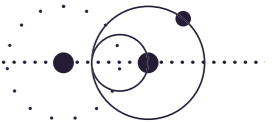
ONE GIANT LEAP  
A W 17



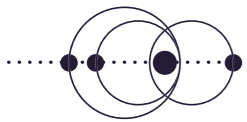
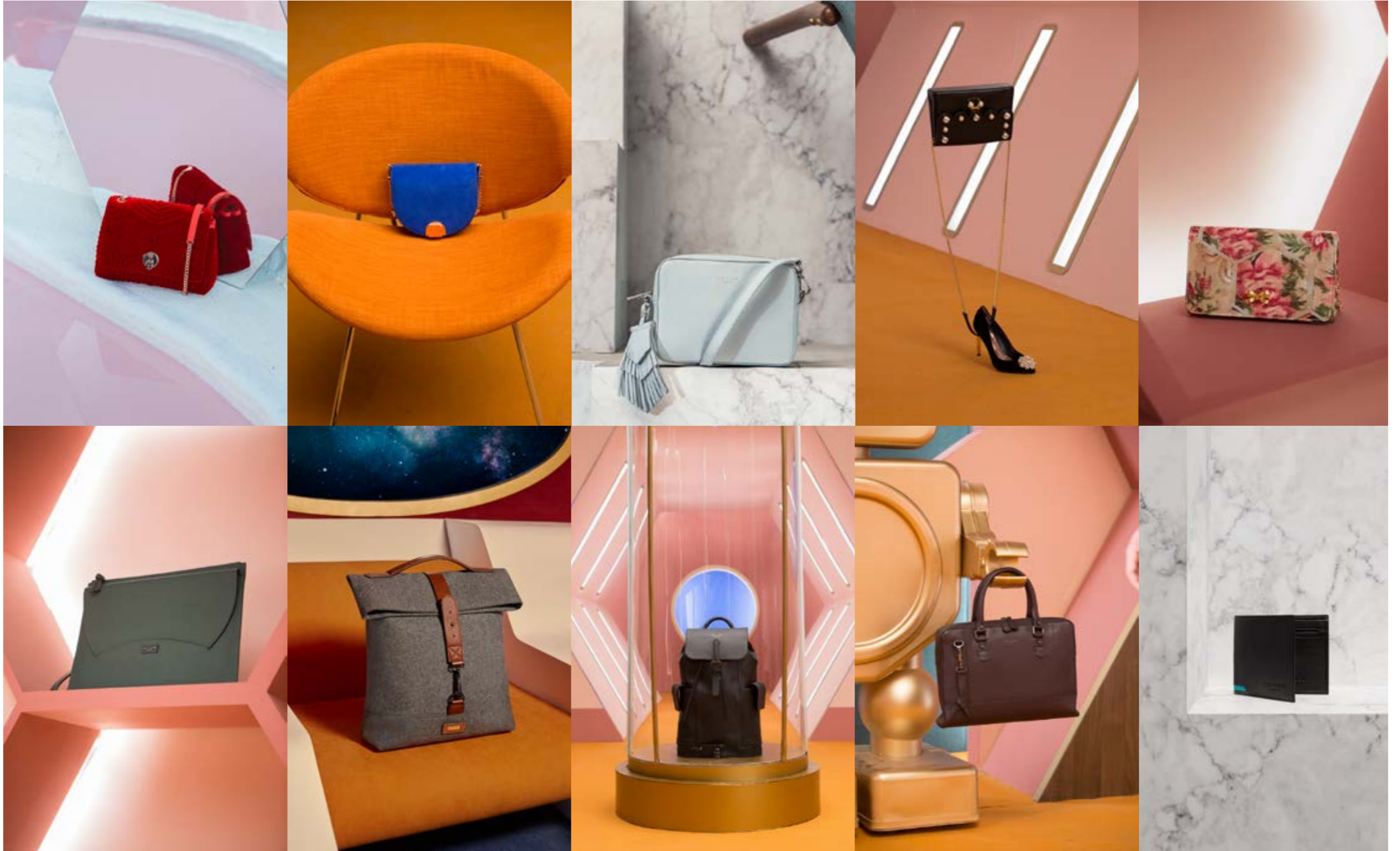
CAMPAIGN PHOTOGRAPHY



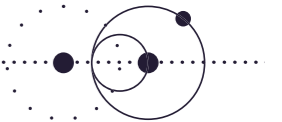
ONE GIANT LEAP  
A W 17

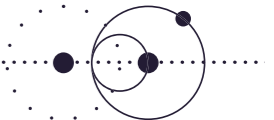
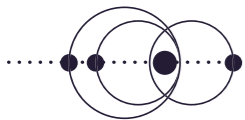
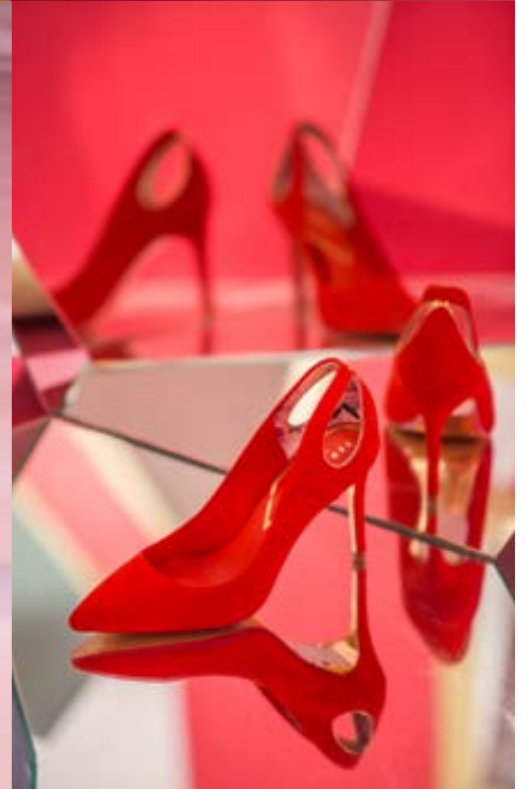
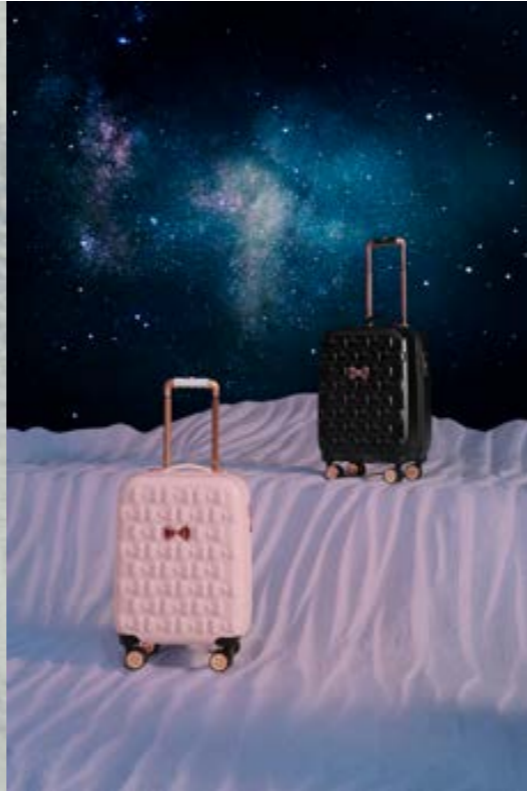


ACCESSORIES PHOTOGRAPHY

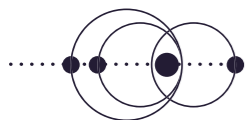
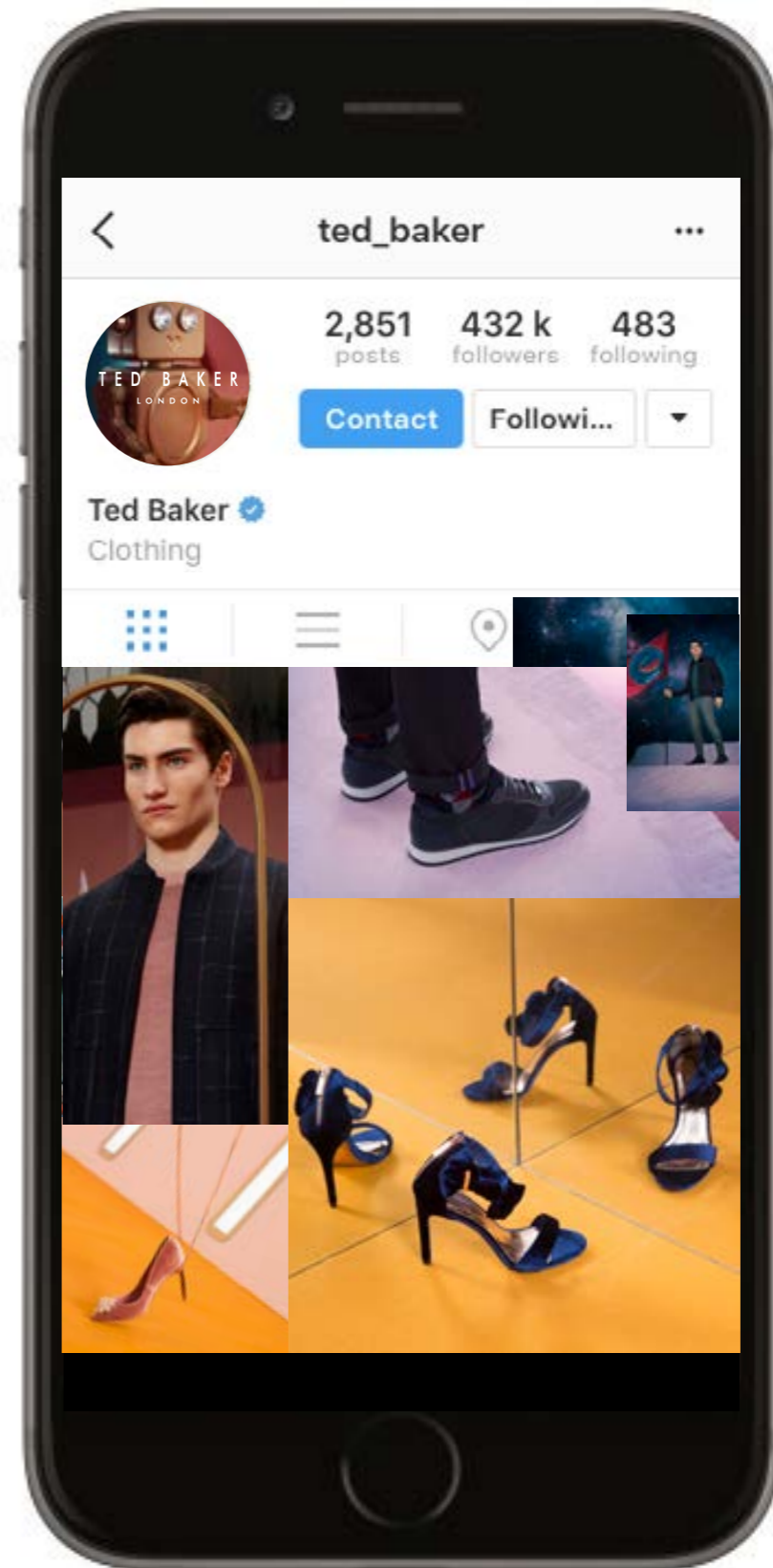
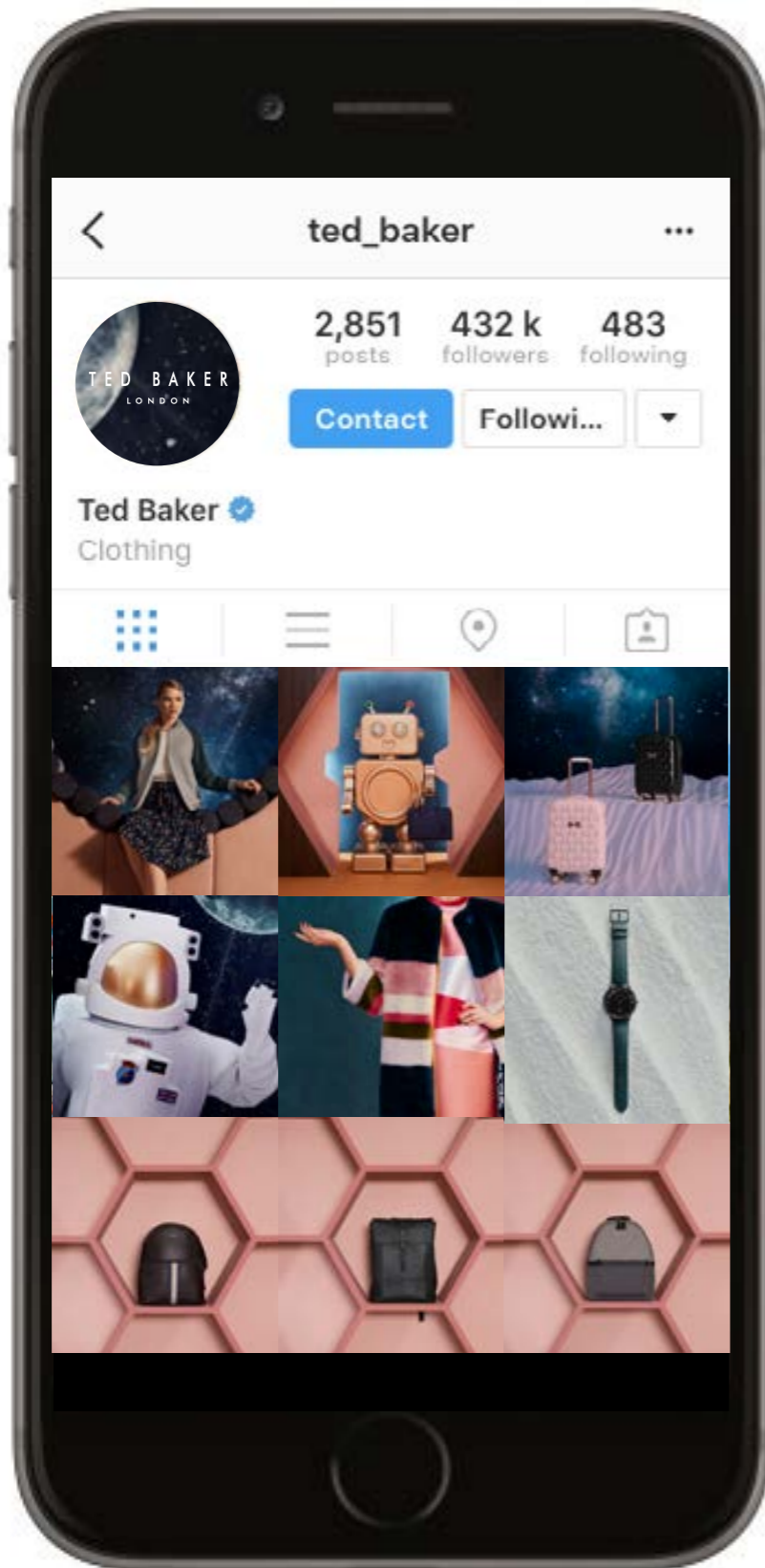


ONE GIANT LEAP  
AW17





SOCIAL CHANNELS

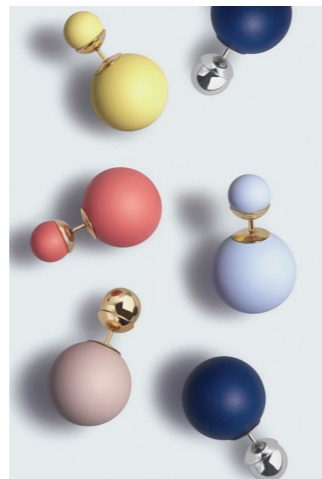


ONE GIANT LEAP  
A W 17



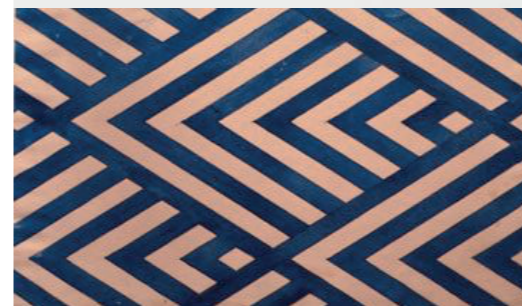
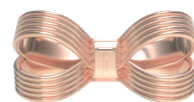
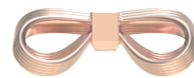
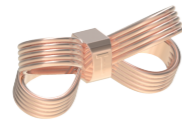
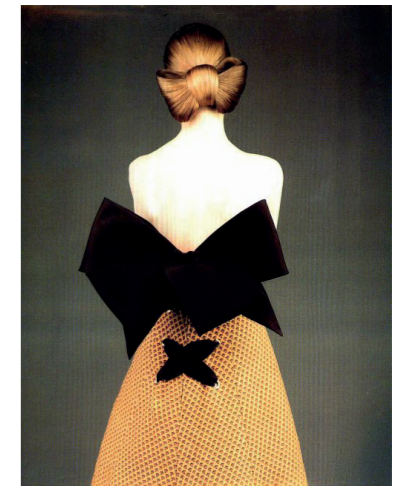
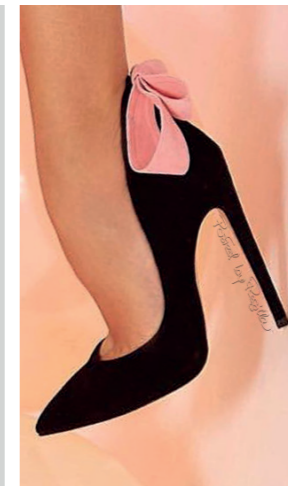


**WOMEN'S  
INSPIRATION**









# WOMEN'S INSPIRATION



# DESIGN FEATURES

## SWAROVSKI CRYSTALS



Sparkling Swarovski jewels add style and panache

## EMBOSSED METALWORK



Art deco inspired metal work will add a dazzling edge to your look

## ICONIC BOW



This bowtiful accessory makes a shining finishing touch

## COLOUR BLOCK



Channeling the colour block trend with clean lines and modern minimalist detail

## SIGNATURE PRINTS



Temples are lined with Ted's new season signature prints

## NEW TEMPLE TIP BOW



Handmade acetate frames finished with Ted's new temple tip bow monogram

## TWO BASE



Flat mask (two base) creating a bold signature look

## VINTAGE STYLING



Never one to forgo the finer details with metalwork inset into topbrows and temple knurling

# DESIGN FEATURES

## SWAROVSKI CRYSTALS



Sparkling Swarovski jewels add style and panache

# DESIGN FEATURES

## EMBOSED METALWORK



Art deco inspired metal work will add  
a dazzling edge to your look

# DESIGN FEATURES

## ICONIC BOW



This bowtiful accessory makes a shining finishing touch

# DESIGN FEATURES

## COLOUR BLOCK



Channeling the colour block trend with clean lines and modern minimalist detail

# DESIGN FEATURES

## SIGNATURE PRINTS



Temples are lined with Ted's new  
season signature prints



# DESIGN FEATURES

## NEW TEMPLE TIP BOW



Handmade acetate frames finished with  
Ted's new temple tip bow monogram

# DESIGN FEATURES

TWO BASE



Flat mask (two base) creating a bold signature look

# DESIGN FEATURES

## VINTAGE STYLING



Never one to forgo the finer details with metalwork  
inset into topbars and temple knurling



DARCY TB1482 (PDM009176)



CLARA TB1487 (PDM010331)



VEDA TB1488 (PDM010336)



DAWN TB1489 (PDM010333)



IRIS TB1490 (PDM010585)



MIRA TB1491 (PDM010340)



RAVEN TB1495 (PDM010257)



ALVA TB1496 (PDM010256)



MARLO TB1497 (PDM010255)



KIANA TB1498 (PDM010254)



LIVIA TB1499 (PDM010251)



MILA TB1500 (PDM010252)



FAWN TB1501 (PDM010253)



SHAY TB1394



TARI TB1440



TIERNEY TB1442



BELLE TB1446



PAIGE TB1448



NOVA TB1457

**SIGNATURE  
BOW**





PDM010340

**CODE** MIRA TB1491 **SIZE** 58/14-140 **B** 51 **COLOUR** 403 ROSE GOLD



SIGNATURE  
PRINTS



PDM010256

**CODE** ALVA TB1496 **SIZE** 57/17-145 **B** 50 **COLOUR** 112 TORT/MINT



RECOLOUR

TED BAKER  
LONDON



CODE SHAY TB1394 SIZE 59/14-135 B 50 COLOUR 011 BLACK

A close-up photograph of a light-colored, textured leather bag. The focus is on a rose gold zipper that runs diagonally across the frame. The zipper pull tab is also rose gold and features a small, embossed logo. The leather has a fine, pebbled grain. The background is a plain, light color.

COLOUR BLOCK



PDM010251

**CODE** LIVIA TB1499 **SIZE** 55/16-140 **B** 45 **COLOUR** 004 BLACK



PDM010252

**CODE** MILA TB1500 **SIZE** 56/15-140 **B** 45 **COLOUR** 250 PINK

The image shows a close-up, high-angle view of a textured surface. The texture consists of a repeating pattern of raised, rectangular shapes that resemble a woven mesh or a specific type of hardware. The shapes are arranged in a staggered, grid-like pattern, creating a three-dimensional effect. The color is a warm, light beige or tan. The lighting is soft and even, highlighting the texture without creating harsh shadows.

DAZZLING HARDWARE



PDM010333

**CODE** DAWN TB1489 **SIZE** 56/16-140 **B** 46 **COLOUR** 852 IVORY



PDM009176

**CODE** DARCY TB1482 **SIZE** 57/15-135 **B** 45 **COLOUR** 145 TORTOISE

TED BAKER  
LONDON



PDM010255

CODE MARLO TB1497 SIZE 55/13-135 B 43 COLOUR 001 BLACK





ULTRA FLAT



PDM010331

**CODE** CLARA TB1487 **SIZE** 141/0-135 **B** 52 **COLOUR** 001 BLACK

TED BAKER  
LONDON



PDM010253

**CODE** FAWN TB1501 **SIZE** 55/13-140 **B** 48 **COLOUR** 122 TORTOISE



**CLASSIC**



PDM010257

**CODE** RAVEN TB1495 **SIZE** 59/14-140 **B** 50 **COLOUR** 147 CHOCOLATE

RECOLOUR

TED BAKER  
LONDON



**CODE** TARI TB1440 **SIZE** 55/16-140 **B** 43 **COLOUR** 200 BURGUNDY

RECOLOUR

TED BAKER  
LONDON



CODE TIERNEY TB1442 SIZE 57/17-140 B 48 COLOUR 200 BURGUNDY

RECOLOUR

TED BAKER  
LONDON



CODE BELLE TB1446 SIZE 57/19-135 B 50 COLOUR 236 PINK



RECOLOUR

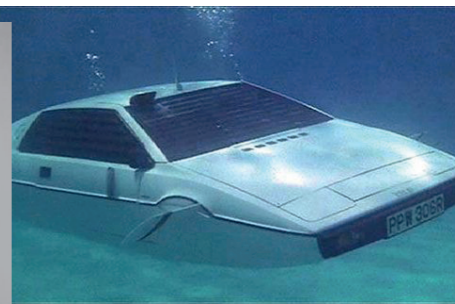
TED BAKER  
LONDON



CODE NOVA TB1457 SIZE 57/15-135 B 47 COLOUR 852 IVORY



**MEN'S  
INSPIRATION**



**LESS  
BUT  
BETTER**





Septième Largeur  
Sneaker



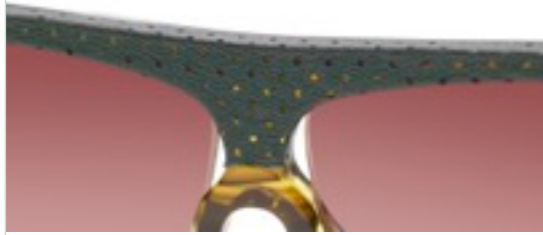


# MEN'S INSPIRATION



# DESIGN SIGNATURES

## GENUINE LEATHER



Retro front shapes are wrapped in genuine leather

## ULTRA FLAT



The season's must have flat two base lenses

## COLOUR BLOCK



Channeling the colour block trend with two tone colouration

## SIGNATURE PRINTS



Temples are lined with Ted's new season signature prints

## SIGNATURE BRANDING



Handmade acetate frames finished with Ted's diamond temple tip monogram

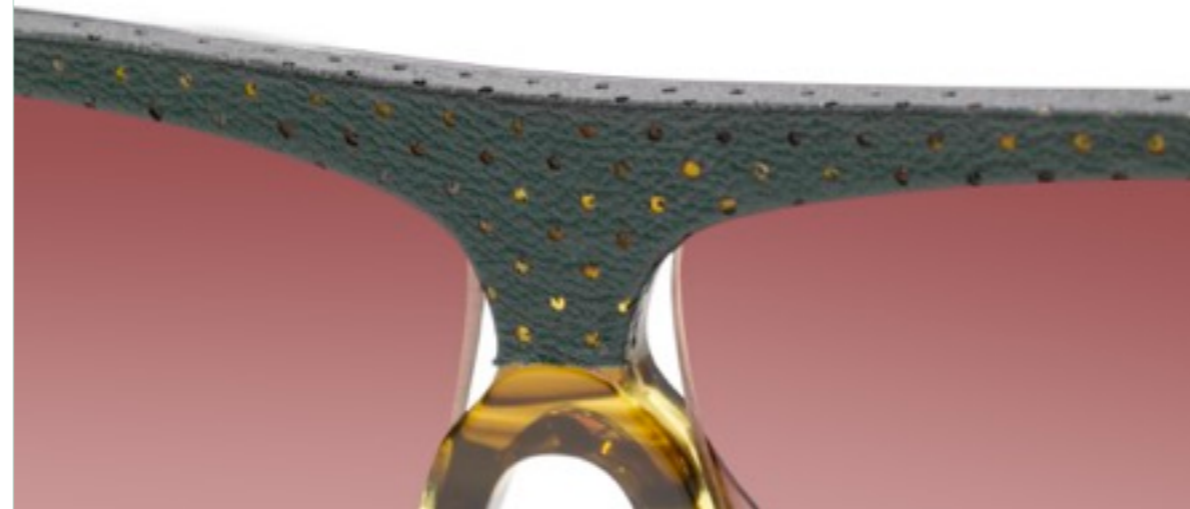
## METAL KNURLING



Never one to forgo the finer details with metalwork inset into topbrows and temple knurling

# DESIGN SIGNATURES

GENUINE LEATHER



Retro front shapes are wrapped  
in genuine leather



# DESIGN SIGNATURES

ULTRA FLAT



The season's must have flat two base lenses

# DESIGN SIGNATURES

COLOUR BLOCK



Channeling the colour block trend  
with two tone colouration

# DESIGN SIGNATURES

## SIGNATURE PRINTS



Temples are lined with Ted's new  
season signature prints

# DESIGN SIGNATURES

## SIGNATURE BRANDING



Handmade acetate frames finished with  
Ted's diamond temple tip monogram

# DESIGN SIGNATURES

## METAL KNURLING



Never one to forgo the finer details with metalwork inset into topbrows and temple knurling

MEN'S SUN 18 OVERVIEW 14 MODELS 3-4 COLOURS 46 SKUS

TED BAKER  
LONDON



DELPH TB1483 (PDM010323)



GILL TB1484 (PDM010324)



NASH TB1485 (PDM010327)



NICHOL TB1486 (PDM010329)



VAUGHN TB1492 (PDM010250)



LOWE TB1493 (PDM010249)



HOLT TB1494 (PDM010247)



WILLIS TB1502 (PDM010262)



ODELL TB1503 (PDM010260)



ERVIN TB1504 (PDM010259)



PDM010985



PDM010986



WADE TB1456

**LEATHER**

TED BAKER  
LONDON



PDM010323

**CODE** DELPH TB1483 **SIZE** 60/10-145 **B** 51 **COLOUR** 105 AMBER HORN



TED BAKER  
LONDON



PDM010324

**CODE** GILL TB1484 **SIZE** 60/12-145 **B** 48 **COLOUR** 908 GREY HORN



ULTRA FLAT

TED BAKER  
LONDON



PDM010247

CODE HOLT TB1494 SIZE 57/16-145 B 45 COLOUR 001 BLACK





The background is a dense, repeating pattern of various tropical leaves and plants. The colors range from light teal to dark blue. The plants include palm fronds, monstera leaves with characteristic holes, and other broad-leafed species. The text is centered horizontally and vertically in a white, bold, sans-serif font.

**SIGNATURE PRINTS**



The image features a central black rectangular area containing the text "DIAMOND EMBOSS" in white, uppercase, sans-serif font. This central area is flanked on both the left and right sides by vertical strips of a repeating pattern. The pattern consists of a grid of diamond-shaped embossed shapes, each with a 3D effect created by shading. The diamonds are arranged in a staggered grid, with each diamond pointing downwards. The shading is done in a way that makes the diamonds appear to have depth, with the top and bottom edges being lighter and the sides being darker, creating a strong sense of three-dimensionality. The overall composition is symmetrical and minimalist, focusing on the texture and geometric form of the embossed pattern.

**DIAMOND EMBOSS**



TED BAKER  
LONDON



PDM010327

CODE NASH TB1485 SIZE 55/16-140 B 43 COLOUR 001 BLACK



TED BAKER  
LONDON



CODE PDM010985 SIZE 56/15-140 B 46 COLOUR 401 S. GOLD

TED BAKER  
LONDON



CODE PDM010986 SIZE 60/14-140 B 52 COLOUR 800 SILVER

A close-up photograph of a dark grey suit jacket. The jacket is the central focus, showing the lapels, a button, and a breast pocket. Inside the pocket, a purple pocket square with a light blue and white floral pattern is visible. The shirt underneath has a repeating pattern of blue and white fan-like shapes. The background is plain white.

CLASSIC



RECOLOUR

TED BAKER  
LONDON



CODE WADE TB1456 SIZE 56/17-145 B 42 COLOUR 183 DK. TORT



**THANK YOU**